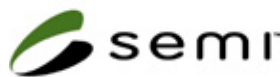


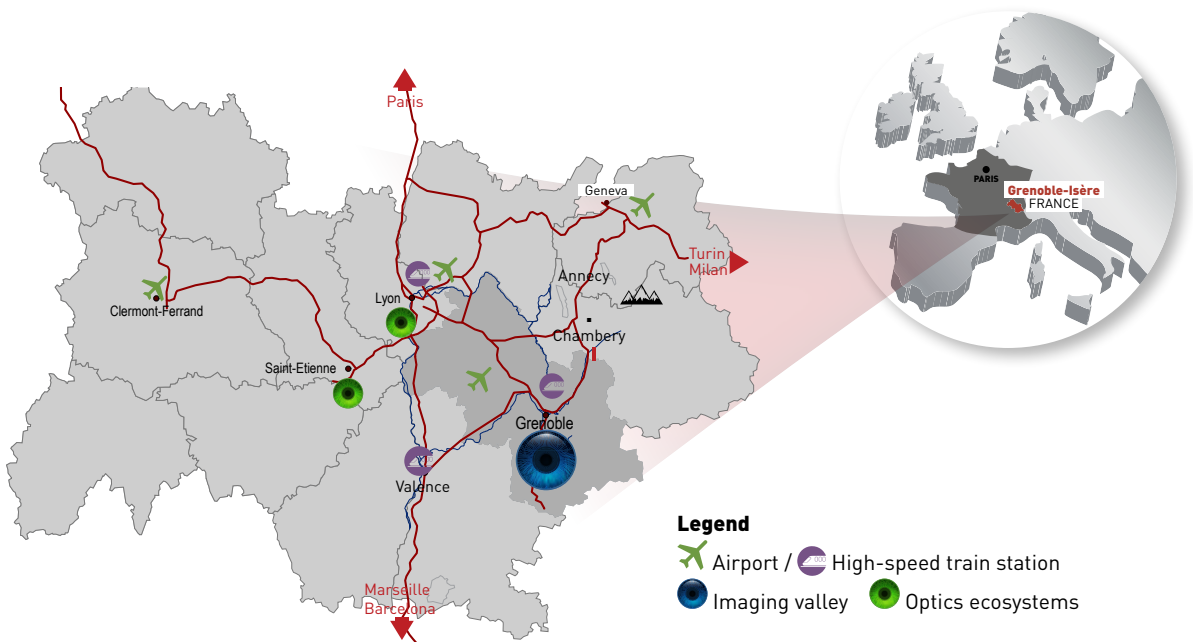
/ INVEST IN
GRENOBLE-ISÈRE, FRANCE /

Shining a Light on **Imaging**



Imaging in Grenoble-Isère France: 50 years of expertise

In the heart of France's #2 region,
Auvergne-Rhône-Alpes



IMAGING & OPTICS Key figures

- 9,000 jobs (50% in academic research)
- 80 companies
- Major industrial players such as STMicroelectronics, Sofradir, Ulis, Teledyne/e2v
- 50+ years in the field
- 7 schools & universities with a specific focus on image and optics
- 44 labs, research institutes or platforms

GRENOBLE-ISÈRE: a region of excellence

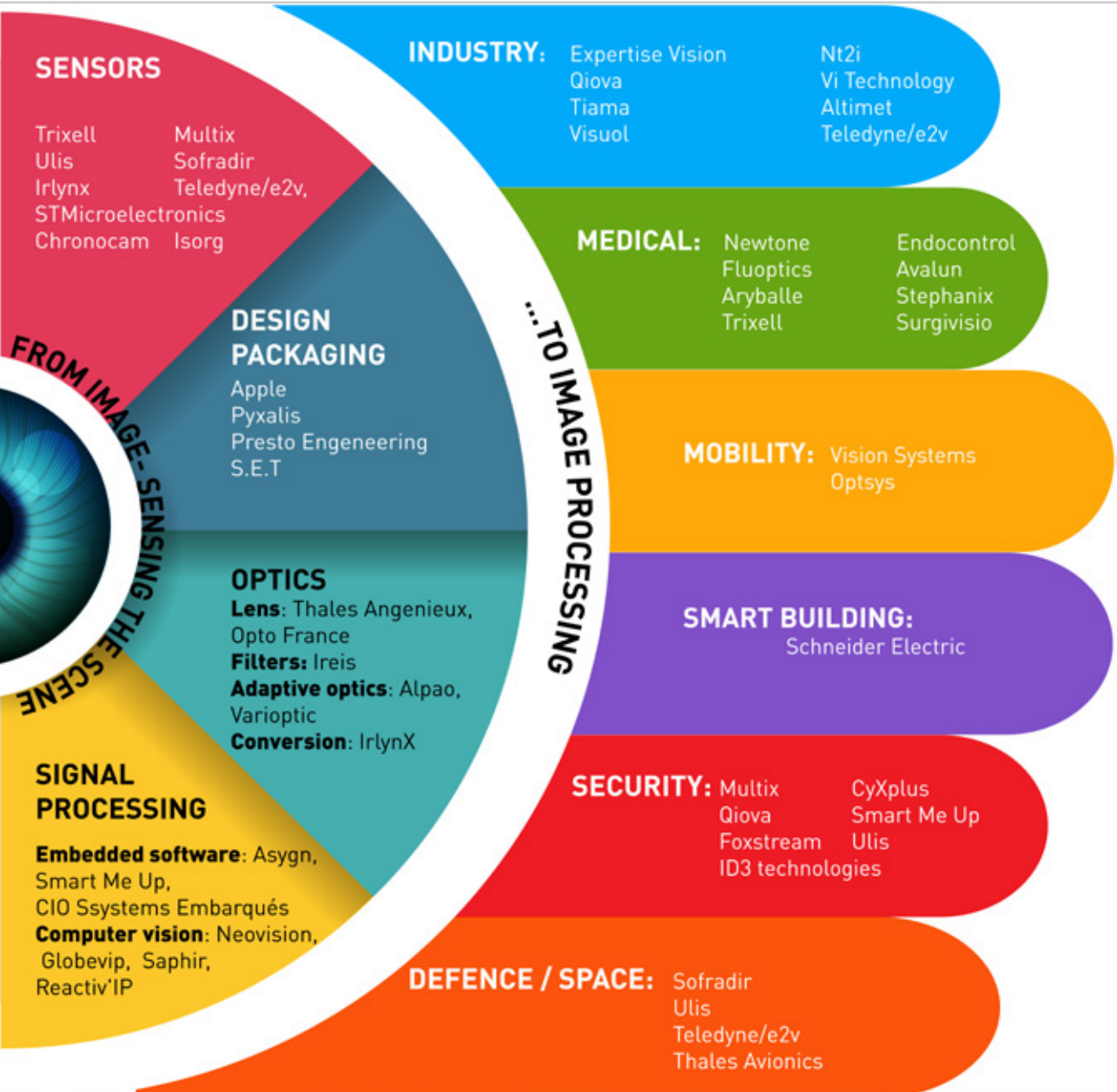
- **INDUSTRIAL** / Above-average concentration of French industrial jobs and world leaders: STMicroelectronics, Schneider Electric, Poma, Petzl, Vicat, Capgemini, Teisseire, Soitec, ARaymond, Air Liquide
- **MULTIMODAL** / France's leading land-based logistics hub; top-ranked river ports
- **DIVERSIFIED** / Meeting place for micro and nanoelectronics, software, energy, healthcare technologies, chemicals and cleantech
- **INTERNATIONAL** / 4 in 10 jobs in industry under foreign flags, almost 500 non-French companies
- **INNOVATIVE** / Highest density of research jobs in France, World's 5th -most inventive city
- **ACADEMIC** / 1 in 5 Grenoble residents is a student; universities and higher education institutes among top international rankings
- **HOSPITABLE** / A city area in the heart of the French Alps, a sustainable, sporty and cultural territory



Imagine a unique ecosystem for the Imaging industry, recognized internationally

The Grenoble-Isère ecosystem will provide you with all the links in the imaging value chain, a historical know-how beginning with the 1st CCD sensors, a wide range of detectors from infrared to visible and x-rays, with researchers and industrial players who continuously invent, design and produce new devices and algorithms. All of this stems from a very strong background and capabilities in optics and materials science, also well-represented in the nearby areas of Saint-Etienne, Clermont-Ferrand and Lyon, all in one region, Auvergne-Rhône-Alpes. These devices are then integrated into a wide variety of applications: automotive, medical, defense (security or aerospace), mobility, industry and smart buildings.

A long history and solid know-how



2

Imagine Talent and Bright Minds

A complete range of education course options, ranging from top-notch electronics and sensing, to optics, materials, image processing and computing

- **Grenoble INP - Phelma**: Engineering school which covers the fields of imaging and signal processing methods
- **Grenoble INP - Ensimag**: Engineering school for applied mathematics and computer science
- **IOGS - Institut d'Optique Graduate School**: Optical engineering, imaging and colours
- **INSA Lyon**: Systems and imaging
- **Telecom Saint-Etienne**: Imaging and photonics, smart-industries
- **Ecole Centrale de Lyon**: Data science, Imaging, Medical Imaging, Signals and Systems
- **Clermont-Auvergne University**: A specialized diploma for computing applied to digital imaging

3

Imagine Research and dedicated platforms

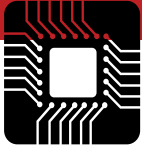
The entire imaging food chain is well-represented, from upstream research in photonics, optics, microelectronics, signal recognition and treatment, cognition and image processing to the applications. Technologies such as LIDAR, Surface metrology, spectral imaging, low-light and 3D imaging technologies are developed and tested here.

- **Institut Lumière Matière** (Lumière Matière Institute)
- **CEA-Leti** and the Photonics Platform
- **Inria Grenoble - Rhône-Alpes** (the French National Institute for computer science and applied mathematics)
- **LIRIS** (Laboratory of InfoRmatics in Image and Information Systems)
- **GIPSA-Lab** (Grenoble Images Speech Signal and Control laboratory)
- **Laboratoire Hubert Curien**: Photonics systems, diffractive optics, image processing
- **CREATIS**: Medical imaging and simulation

4

Imagine customized support for your project

- Economic project engineering and relocation assistance: **AEPI-Invest in Grenoble-Isère**, France
- **Minalogic**, a global innovation cluster for digital technologies addressing all industries —with +350 members, including +60 in the field of optics and imaging— and providing support for collaborative and innovative projects and business growth
- Technology transfer: **SATT Linksium, Floralis**
- **French Tech in the Alps**: supporting and accelerating startups
- Incubators and accelerators: **TARMAc, BizmedTech, Technolac**
- Financing partners: Business Angels, seed fund (Emertec...), dedicated events such as Forum 5i



4 reasons to choose Grenoble-Isère, France for your project

1.

Imagine a
unique ecosystem
for the Imaging industry,
recognized internationally

2.

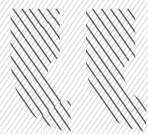
Imagine
Talent
and
Bright Minds

3.

Imagine
Research
and
dedicated platforms

4.

Imagine
customized support
for your project



For more than 50 years, the Grenoble region has been the undisputed and steadily growing European Imaging Cluster of reference, with a very strong ecosystem providing a wide range of Imaging technologies and solutions, thanks to very talented companies, research centers and universities.”

Jean-Luc Jaffard

Imaging Expert and Consultant
Chronocam Vice President
Sensor Engineering and Operations

Do you need help **developing your business in France?** We offer **customized solutions!**

Take advantage of our expertise



Business and sector information



Scheduling of visits and meetings



Real estate proposals & visits



Assistance in opening and operating your French organization



Support for HR and recruiting

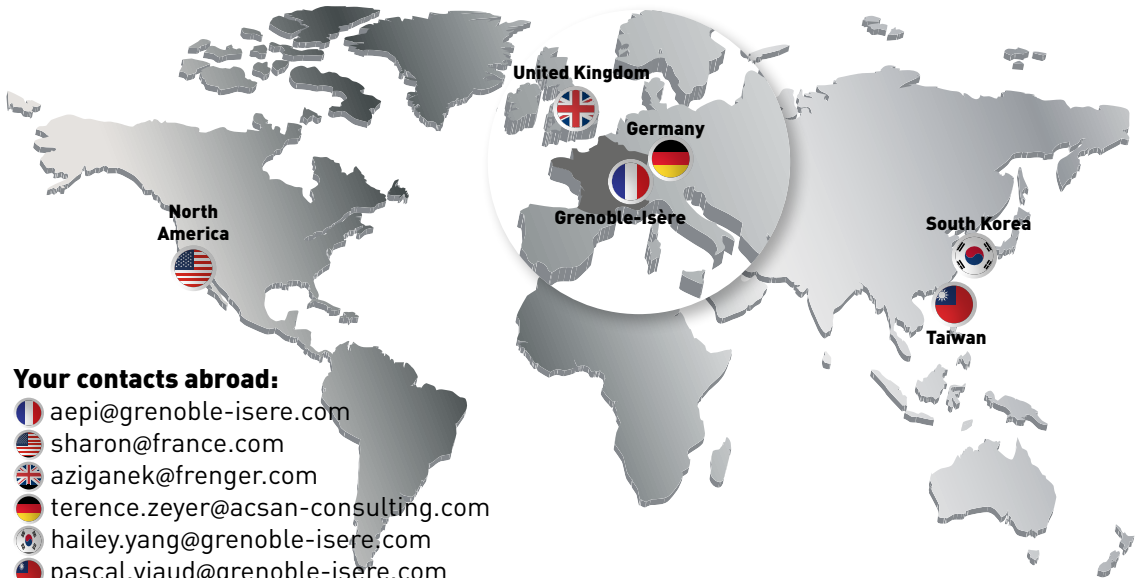


Connect with the local ecosystem



Research on funding

Find us worldwide



Your contacts abroad:

-  aepi@grenoble-isere.com
-  sharon@france.com
-  aziganek@frenger.com
-  terence.zeyer@acsan-consulting.com
-  hailey.yang@grenoble-isere.com
-  pascal.viaud@grenoble-isere.com

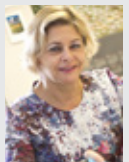
Our success stories



Find out more



Contact our expert:
Véronique Péquignat
v.pequignat@grenoble-isere.com



AEPI
Invest in
Grenoble-Isère,
France
www.grenoble-isere.com

isère
LE DÉPARTEMENT
www.isere.fr

AEPI - Agence d'Études et de Promotion de l'Isère
1 place Firmin-Gautier - 38027 Grenoble Cedex 1 - France
Tél. : +33(0)4 76 70 97 18

